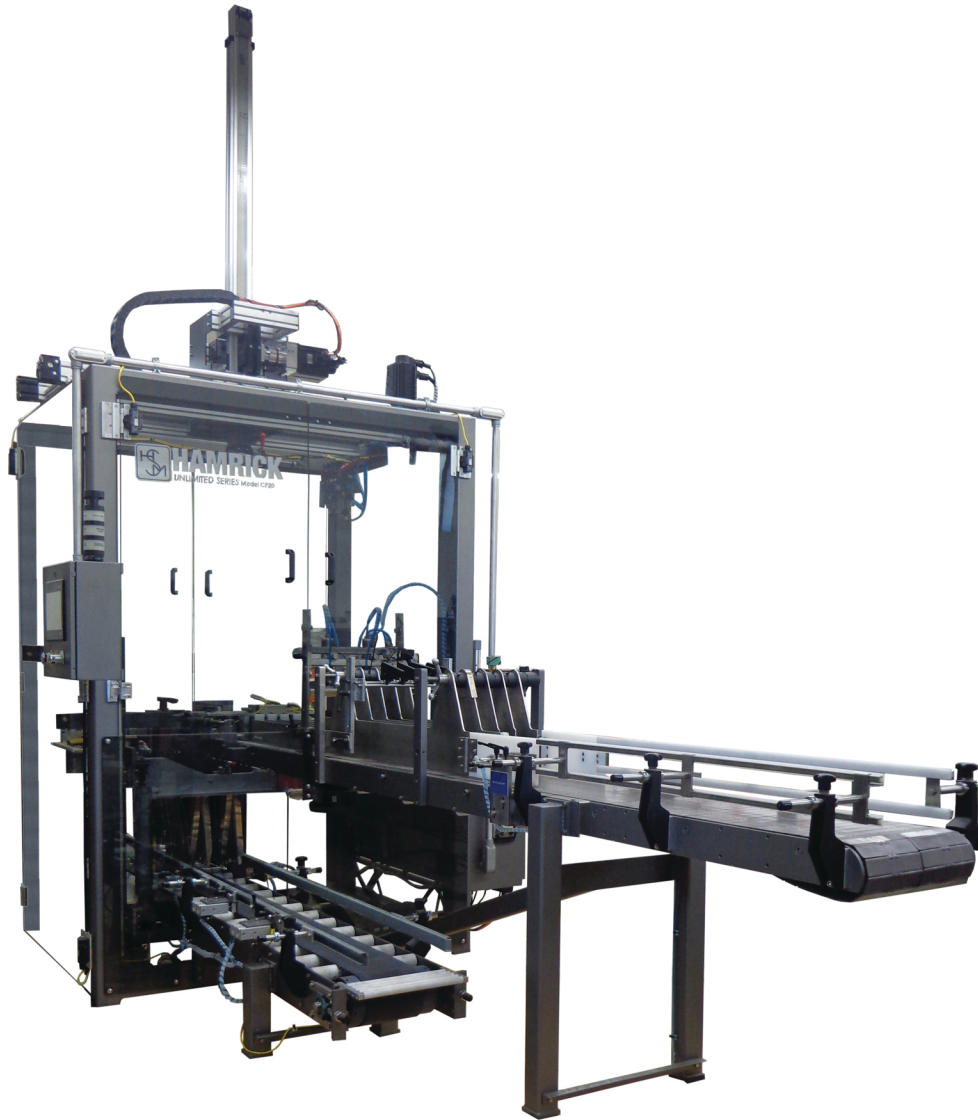




# HAMRICK

## CP20 PICK & PLACE CASE PACKER



**Round**  
Containers



**20**  
Cases Per Minute

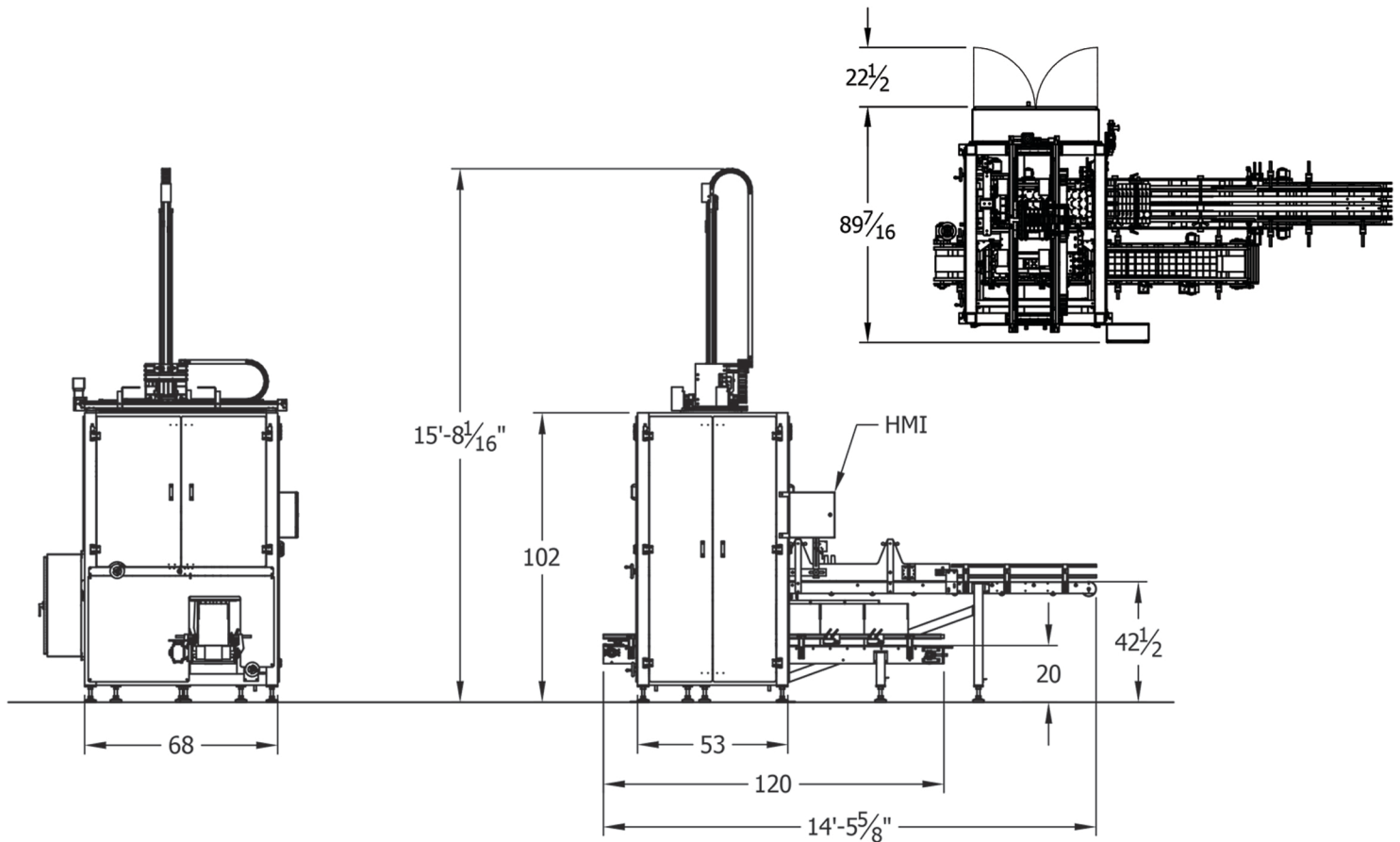


**Medium to High**  
Production Volume



# HAMRICK

## CP20 PICK & PLACE CASE PACKER



### Unit Specifications:

Gently pack fragile product using a servo controlled two-axis overhead pick & place

Tooling featuring gripper, vacuum, or bladder assemblies

Allen-Bradley MicroLogix 1400 PLC with PanelView 300 HMI

Single or double case infeed with cycle times up to 10 per minute (cases up to 20 per minute)

\*speeds may increase depending on application

### Upgrades Available:

"D" Series for non-round containers

Four flap opener for reshipper cases

Down bottle detection

No-tool quick changover

4-Tier flashing light tree for interrupted cycles

**One (1) Year Warranty and 100% Money Back Guarantee Always Included**